

Chamaeleon DECO



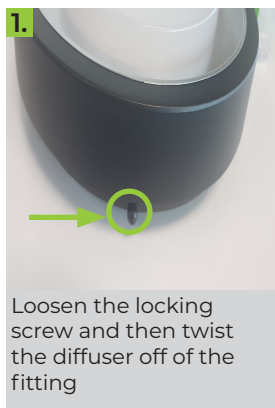
Charcoal Black Standard

Installation Instructions

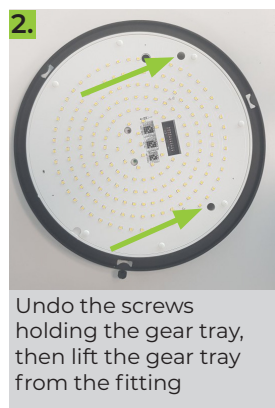


NOTE: All electrical work must be carried out by a licensed electrician as per the latest AS 3000 wiring regulations. The luminaire must be operated within its specified operating parameters and in accordance with our warranty requirements. De-energize all supplies before maintenance. This luminaire contains non-user replaceable lamps and should only be replaced by the supplier, a service agent or qualified person. These documents are available on our website.

MOUNTING THE FITTING



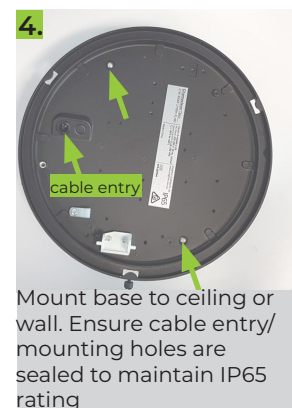
1. Loosen the locking screw and then twist the diffuser off of the fitting



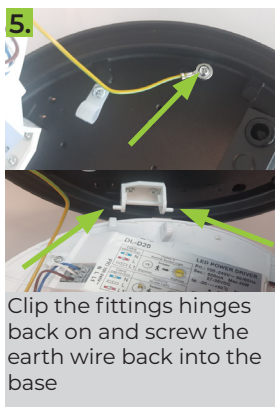
2. Undo the screws holding the gear tray, then lift the gear tray from the fitting



3. Unscrew the earth wire and disconnect the gear tray from the fittings hinges



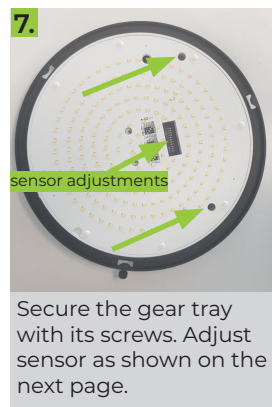
4. Mount base to ceiling or wall. Ensure cable entry/ mounting holes are sealed to maintain IP65 rating



5. Clip the fittings hinges back on and screw the earth wire back into the base



6. Connect Neutral wire to terminal "N", Earth to Earth terminal, Active wire to terminal "1"

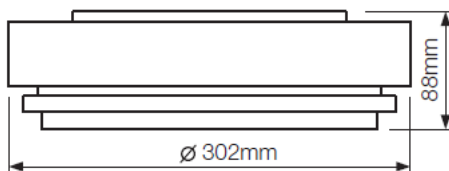


7. Secure the gear tray with its screws. Adjust sensor as shown on the next page.



8. Twist the diffuser back on the fitting and tighten the locking screw.

DIMENSIONS



Key Luminaire Specifications

Model	Version	Power Rating	Ambient Temperature	IP Rating	IK Rating
D-Cham-C-CB	Sensor	220-240V 50/60Hz, 21W	-20°C to +50°C	IP65	IK10

CLEANING

To clean the fitting, use a damp soft cloth. Do not use chemical cleaning products

Chamaeleon DECO



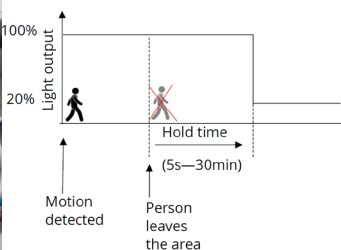
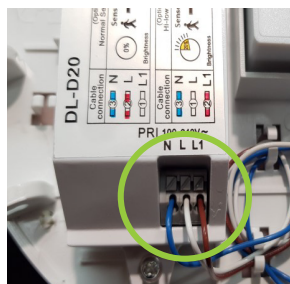
Charcoal Black Standard

Installation Instructions

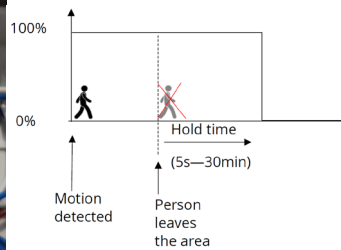
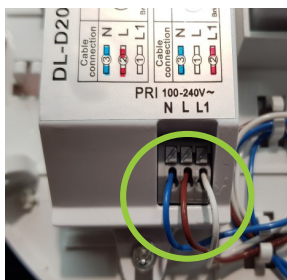
CHANGING THE STANDBY LIGHT LEVEL

The standby level can be set to either 0% or 20%. Factory setting is 20%. To change the standby light level, swap the position of the brown and white wire on the driver.

20% STANDBY



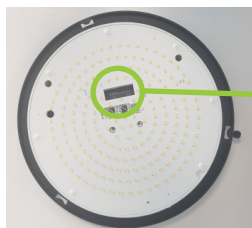
0% STANDBY



For 20% standby ensure blue wire is in "N" terminal, white wire in "L" terminal and brown wire in "L1" terminal.

For 0% standby ensure blue wire is in "N" terminal, white wire in "L" terminal and brown wire in "L1" terminal.

DIP SWITCH SETTINGS



DISABLING THE SENSOR



To disable the motion sensor, insert a cable loop between terminal 1 and terminal 2 as pictured

MICROWAVE SENSOR DETECTION RANGE

The detection range/sensitivity of the sensor may be adjusted if required. Default setting is **100%**.

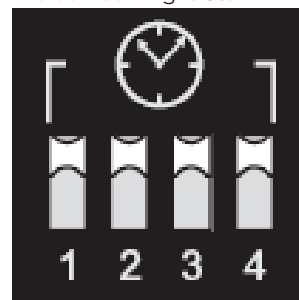
Sensor Range			
Dipswitch	1	2	3
100%	ON	ON	ON
75%	OFF	ON	ON
50%	ON	OFF	ON
25%	ON	ON	OFF
10%	OFF	OFF	OFF



HOLD TIME

Hold time is the time the fitting remains at 100% brightness after motion is no longer detected. Default setting is **5s**.

Hold Time				
Dipswitch	1	2	3	4
5s	ON	ON	ON	ON
30s	OFF	ON	ON	ON
1min	ON	OFF	ON	ON
5min	ON	ON	OFF	ON
15min	ON	ON	ON	OFF
30min	OFF	OFF	OFF	OFF



DAYLIGHT SENSOR

Please note: The daylight sensor can only be used if the standby light level is set to 0% (off), see top of this page. If the standby light level is set to 20%, the daylight sensor has to be set to "disabled".

The daylight sensor may be used to activate the motion sensor at night. When the ambient light level drops below the selected value, the motion sensor will be active and will switch the fitting to full light when motion is detected. When the ambient light level exceeds the selected value, the motion sensor will not be active. Default setting is disabled. For most situations, a setting of 30lux is suitable.

Daylight Sensor				
Dipswitch	1	2	3	4
2lux	ON	ON	ON	ON
5lux	OFF	ON	ON	ON
10lux	ON	OFF	ON	ON
30lux	ON	ON	OFF	ON
50lux	ON	ON	ON	OFF
Disabled	OFF	OFF	OFF	OFF

