

LINEAR LIGHT enL-LI943



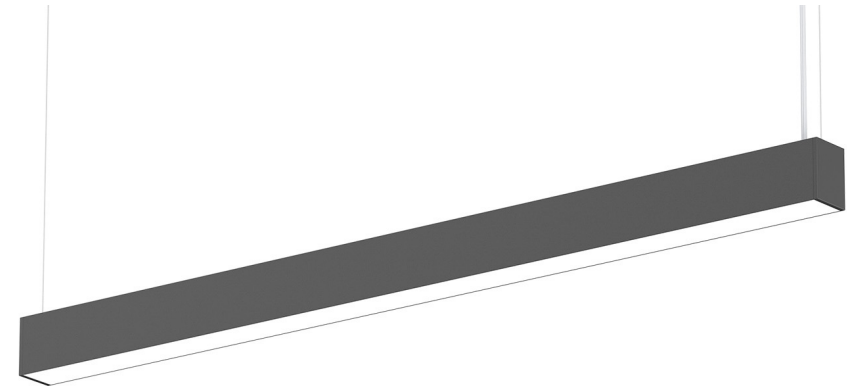
The LI943 LED linear light is a highly adaptable fitting featuring a variety of mounting, power and control options. The fitting can also be connected to create a singular longer fitting.

FEATURES

- Efficacy up to 160lm/W
- IP20 - Ingress protection

OPTIONS

- Multiple Mounting Options
- Multiple Power Options
- Colour Options - White or Black
- DALI Dimmable available
- Connecting options available



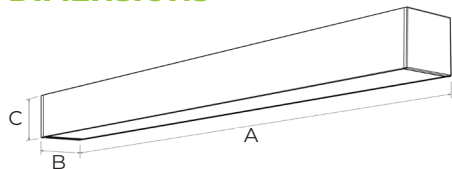
LINEAR LIGHT en-LI943

PRODUCT RANGE

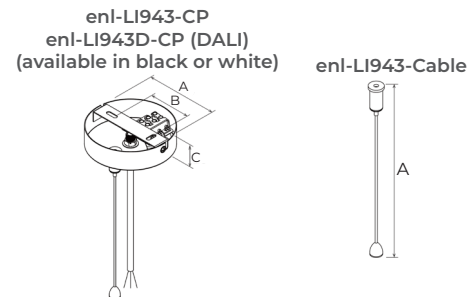
Model #	Rated Power (W)		Luminous Flux (lm)	Beam Angle		
	Downlight	Uplight		Opal	Prismatic	
enl-LI943-17-8yy-600-dd-c	17		1350-1500	Down 110°	Down 75°	
enl-LI943D-17-8yy-600-dd-c			1300-1450			
enl-LI943-22-8yy-600-dd-c			5	1780-2100	Up 110°	Up 110°
enl-LI943D-22-8yy-600-dd-c				1750-2000	Down 110°	Down 75°
enl-LI943-36-8yy-1200-dd-c	36		2800-3300	Down 110°	Down 75°	
enl-LI943D-36-8yy-1200-dd-c			2700-3200			
enl-LI943-45-8yy-1200-dd-c			9	3700-4400	Up 110°	Up 110°
enl-LI943D-45-8yy-1200-dd-c				3600-4300	Down 110°	Down 75°

D stands for DALI. Use LI943D for DALI dimmable lighting
 yy stands for CCT. Use 30 for 3000K, 40 for 4000K, 57 for 5700K.
 dd stands for diffuser type. Use OP for Opal cover or PR for Prismatic cover
 c stands for Fixture Colour. Use W for White or B for Black
 22W and 45W are both Down and Uplight fittings.

DIMENSIONS



Model #	A	B	C	Weight
enl-LI943-17-8yy-600	602	57	76	1.7
enl-LI943-36-8yy-1200	1212			2.7
enl-LI943-CP	100	60	25	0.27
enl-LI943D-CP				
enl-LI943-Cable	1500			



COMPLIANCE

The enl-LI943 meets all relevant standards and regulatory requirements.



TECHNICAL INFORMATION

Optical

Light source	LED
CRI	Ra>80
Beam Angle	Opal : 110° Down, 110° Up Prismatic : 75° Down, 110° Up
CCT	3000K, 4000K, 5700K

Electrical

Power consumption	17W - 45W
Operating voltage & frequency	220-240 VAC , 50/60 Hz
Power factor	>0.9

Environmental

IP rating	IP20
Ambient temperature range	-20°C to + 45°C
Material Composition (body)	Aluminium
Fixture Colour	White (RAL 9016) / Black (RAL9005)
Expected Lifespan	>54,000hrs @L70
Warranty*	5 years

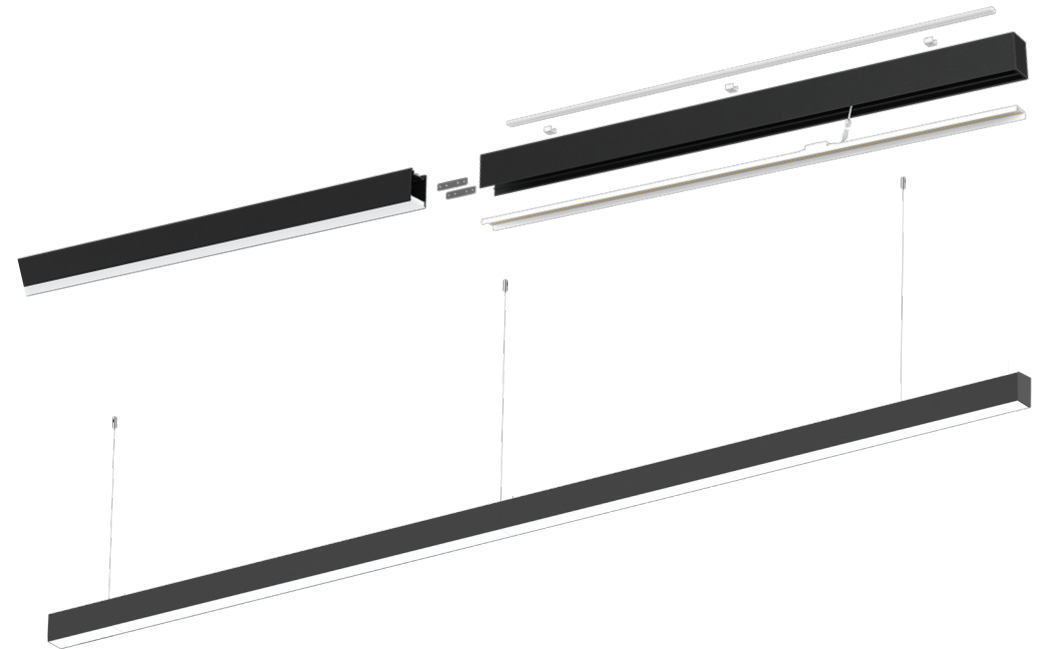
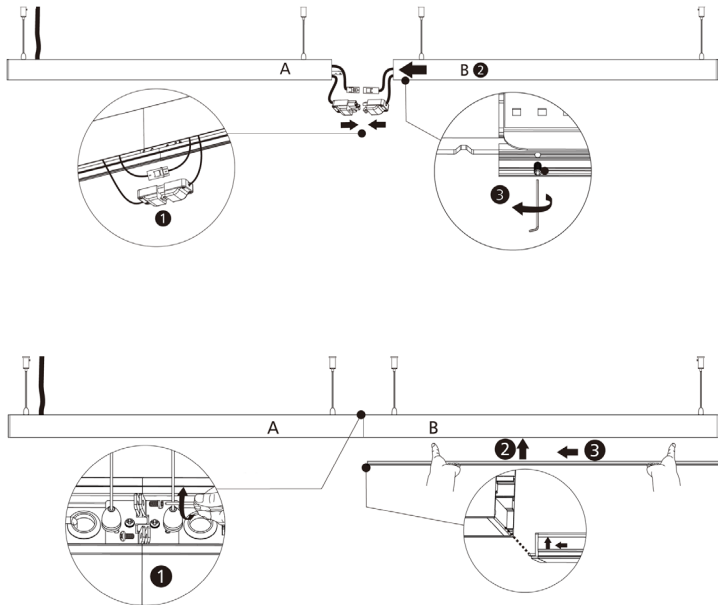
Data subject to change without notice
 * Refer to warranty policy

LINEAR LIGHT en-LI943



CONNECTING THE FITTINGS

The LI943 can be adapted with multiple fittings, enabling you to create a complete continuous luminaire. Please see below instructions



COMPLIANCE

The en-LI943 meets all relevant standards and regulatory requirements.



www.enlighten.com.au | 1800 365 444

Ver 1



enLighten Australia Pty Ltd
3/12 Frederick St, St Leonards, NSW 2065